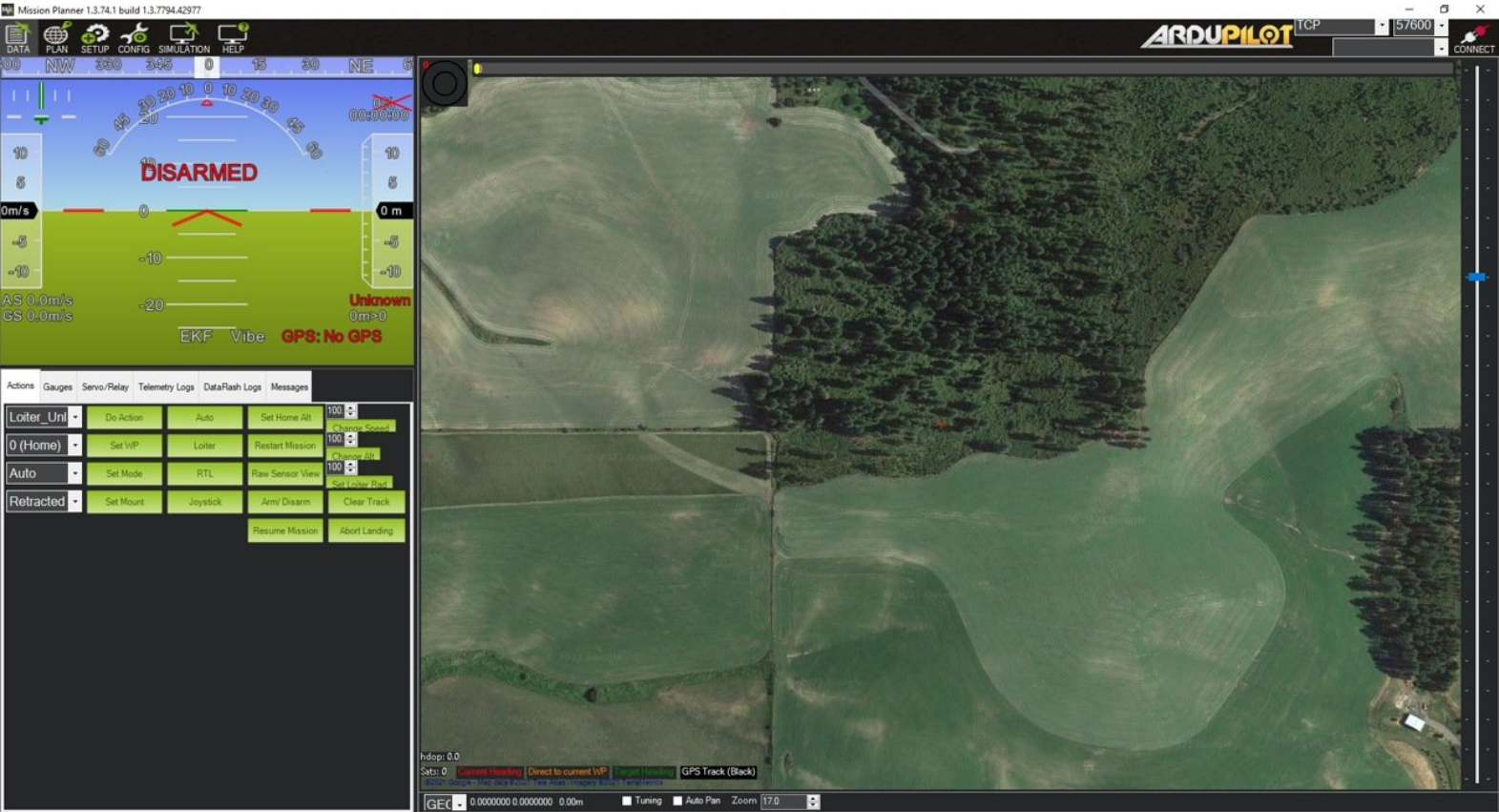




# 4 - Pre-Launch

Written By: Daniel Neal

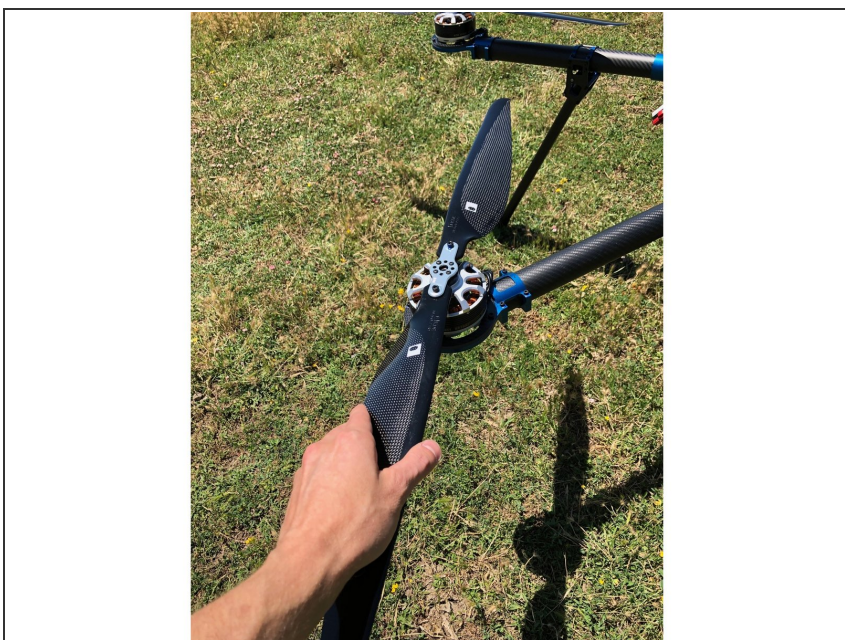


## Step 1 — GCS



- GCS powered on, AC power if available
- GCS C2 modem plugged into GCS
- Open Mission Planner

## Step 2 — Propellers



- Ensure propellers are safe for flight (properly mounted and unfolded)

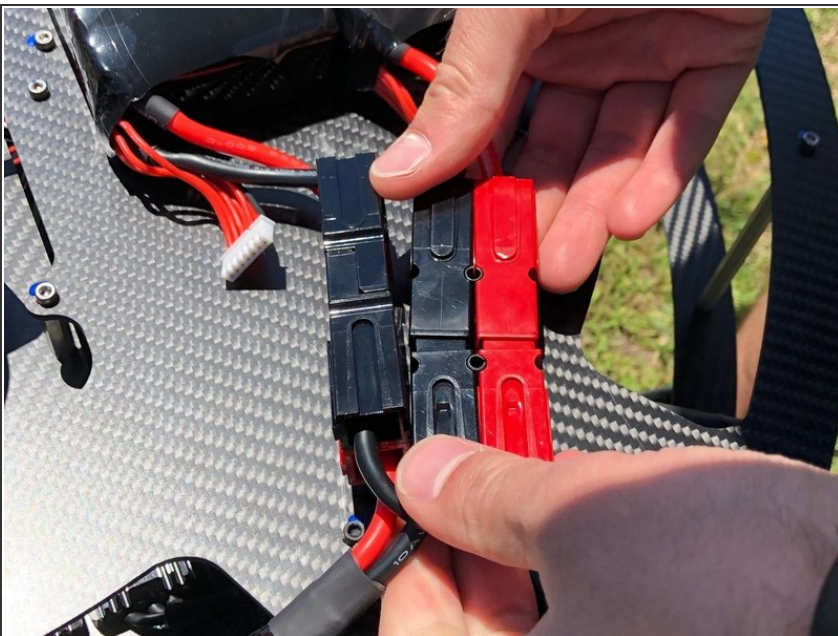


## Step 3 — Safety Transmitter



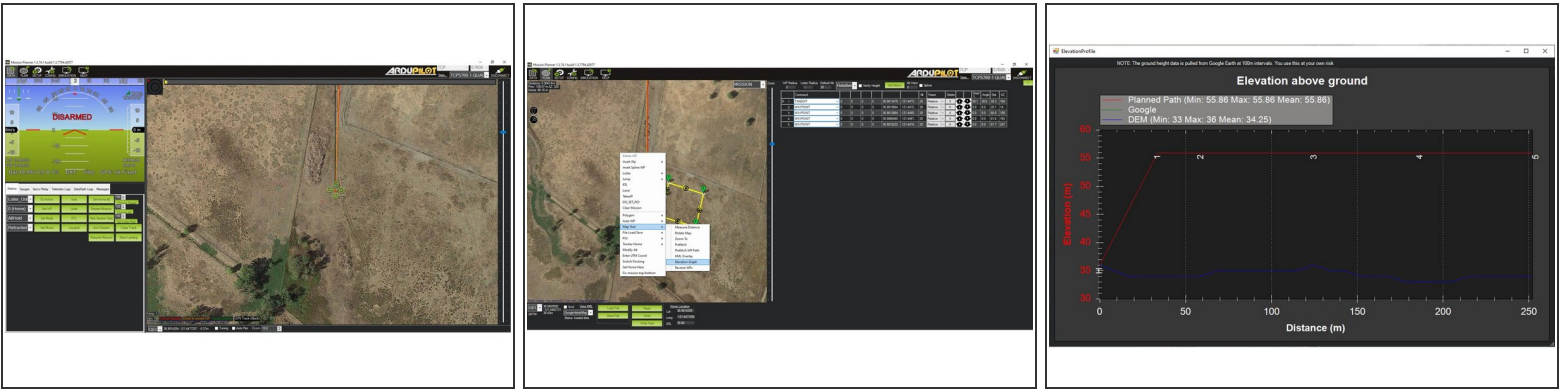
- Powered on, charge acceptable
- Set to non-auto mode
- ① Mode switch varies by customer request. Default ASW builds typically utilize the upper left 3-position toggle for flight controller modes.
- Throttle down

## Step 4 — Aircraft



- Batteries connected
- ① Autopilot will make an audible tone once initialized

## Step 5 — Pre-Launch 1



- GCS software connected to aircraft
- Autopilot confirm disarmed
- Mission profile read from aircraft, displayed correctly
- ❗ After reading back the mission profile, ASW recommends performing an elevation check for safety (please reference Mission Planner map tools)
- C2/Telemetry strength at minimum loss
- Flight modes respond to safety transmitter
- Safety transmitter confirm non-auto mode, throttle down

## Step 6 — Pre-Launch 2



- GPS has 3D fix
- ❗ ASW recommends ensuring that HDOP is below 2.0
- HUD correctly responds to motion
- Compass heading displays correctly
- ❗ All ASW HLM aircraft ship with magnetometer calibrations factory completed. These should not require recalibration, unless modifications are made to the aircraft. Please contact ASW if necessary.
- Battery voltage full or acceptable for planned flight
- Payload is prepared, working correctly
- Aircraft in desired location, area cleared