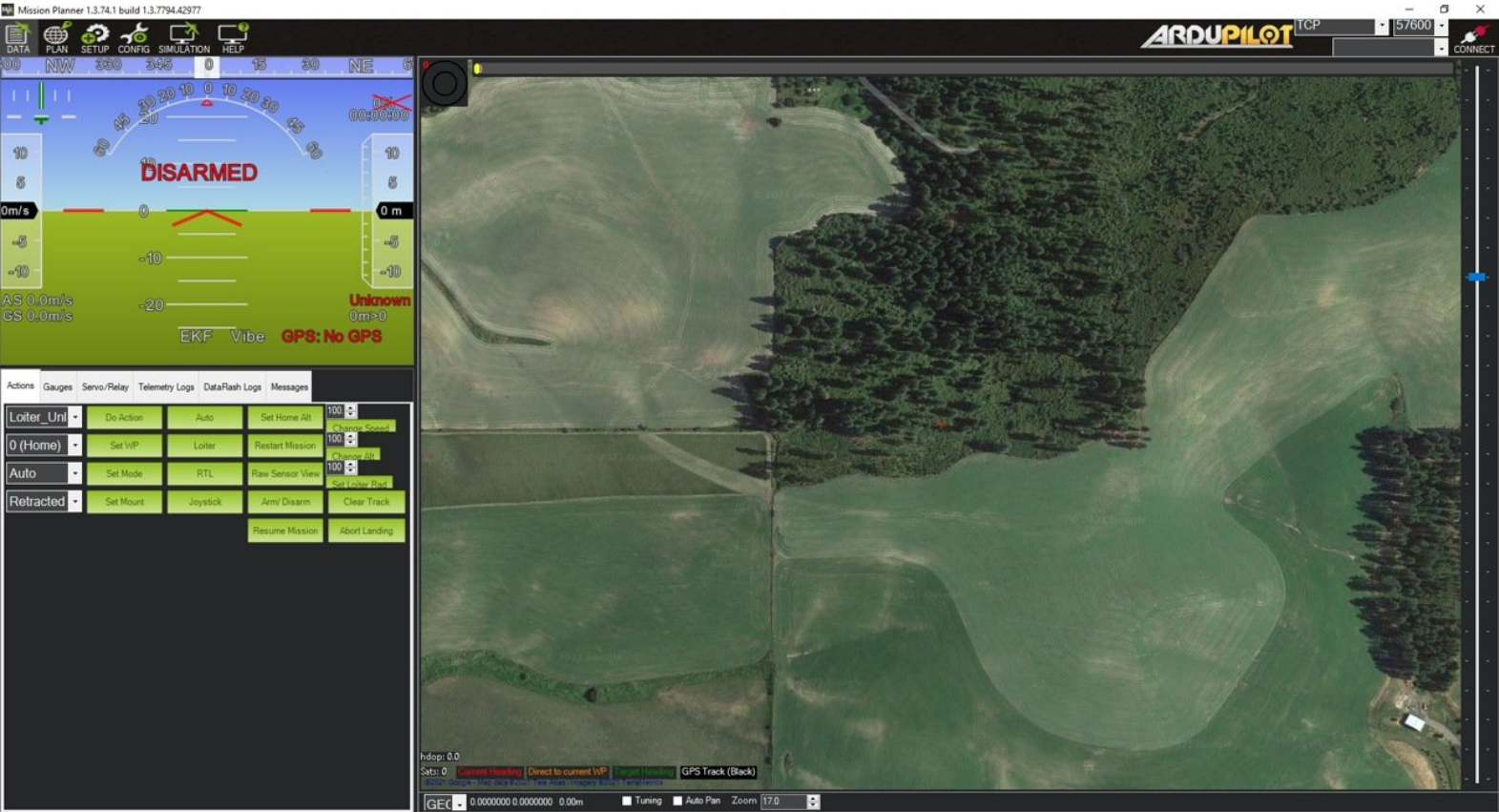


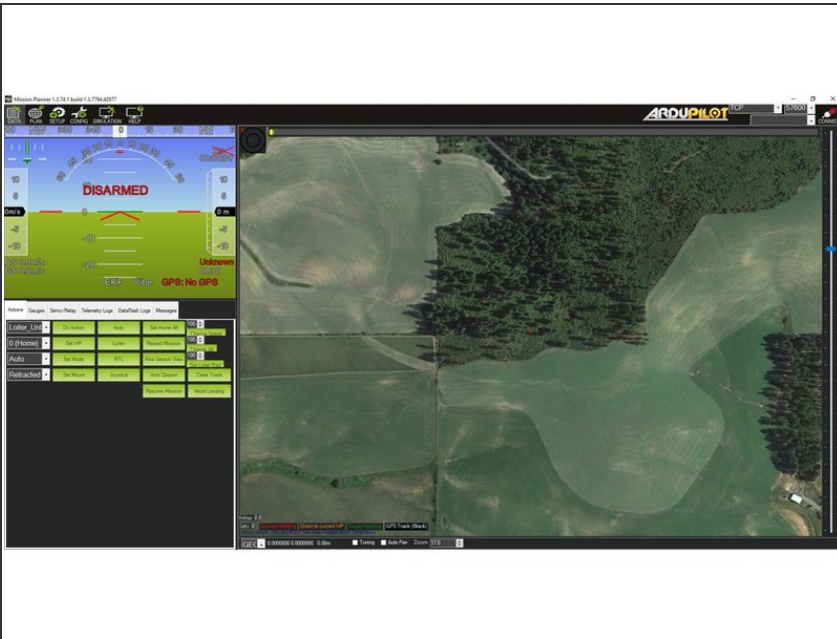


# 5 - Launch

Written By: Daniel Neal



## Step 1 — Launch 1



- Launch area and airspace clear
- ASW suggests placing the drone into auto mode and checking the following items on the HUD: altitude near zero and stable, flight correctly displays AUTO, active waypoint displays 1, waypoint distance is near zero
- ❗ By default, ASW ships all drones configured such that a takeoff waypoint is required to pass pre-arming checks.

## Step 2 — Launch 2



- Safety transmitter in loiter mode
- Autopilot armed
- ⚠ Propellers will begin spinning!
- Safety transmitter in auto mode
- Safety transmitter throttle to 50%
- ⚠ Aircraft will begin flight